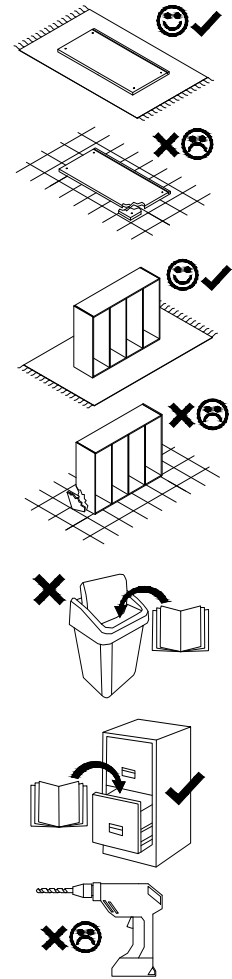


# KELLY

4DRD

ca. 206 cm  
ca. 51 cm

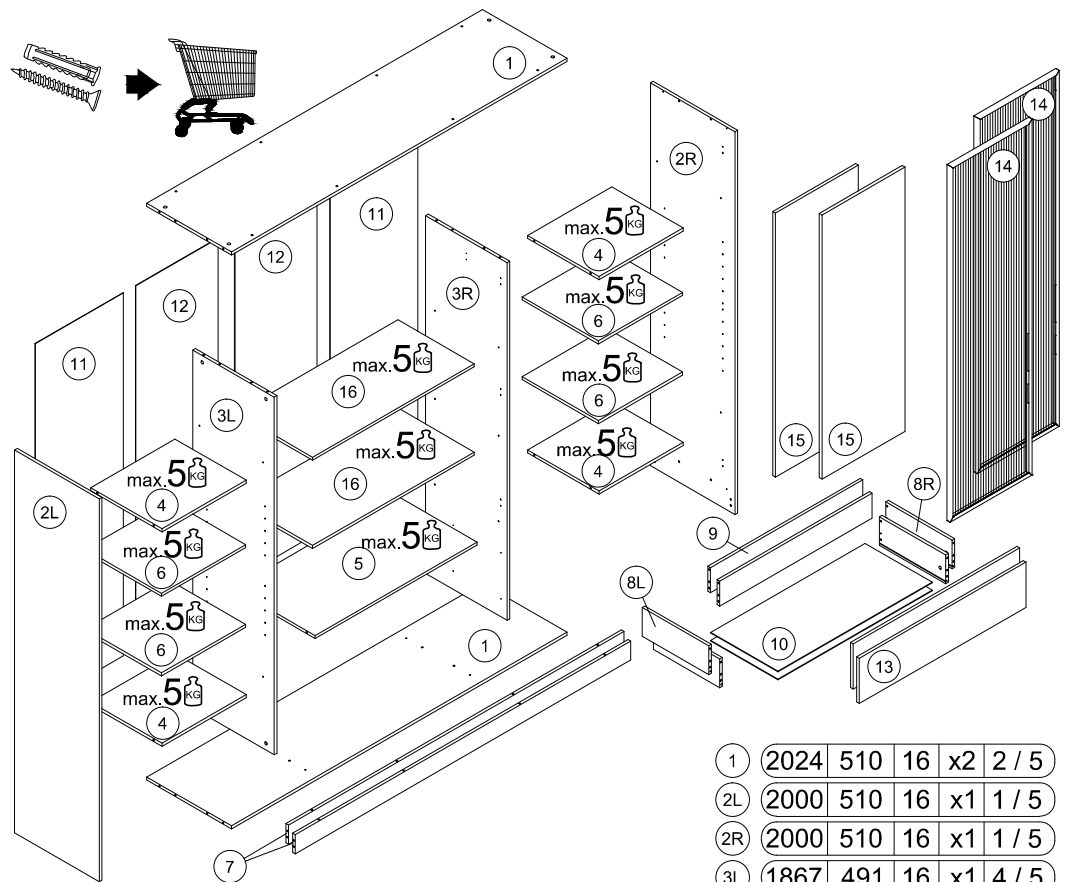
ca. 200 cm



- |                                  |                              |
|----------------------------------|------------------------------|
| (D) Montageanleitung             | (GB) Assembly Instructions   |
| (FR) Notice de montage           | (IT) Istruzioni di montaggio |
| (NL) Handleiding voor de montage | (PL) Instrukcja montażu      |
| (CZ) Montážní návod              | (SK) Návod na montáž         |
| (HU) Szerelési útmutató          | (RO) Instrucțiuni de montaj  |
| (TR) Montaj talimatı             | (RU) Инструкции по монтажу   |

**PIASKI**  
SINCE 1989

Fabryka Mebli PIASKI Henryk Kaczorowski sp. z o.o.  
PIASKI 1C, 63-645 Łęka Opatowska  
gpr@piaski.com.pl

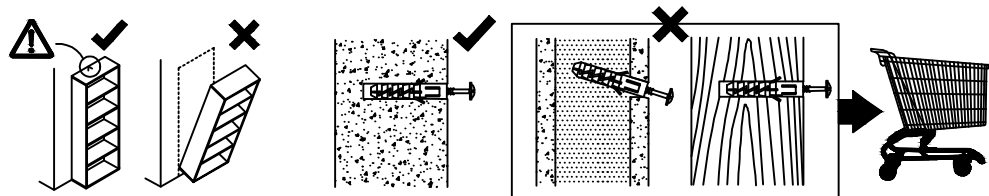
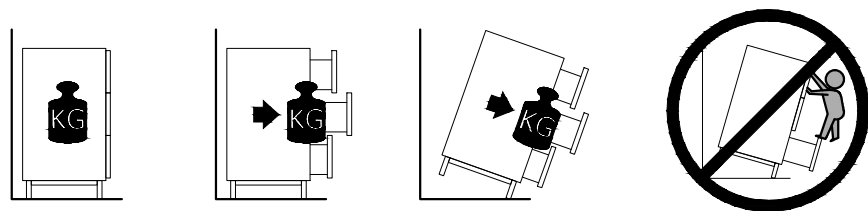


|                                      |                   |                                 |                                    |                            |
|--------------------------------------|-------------------|---------------------------------|------------------------------------|----------------------------|
| <b>PHR</b><br>CZARNY<br>WPUZCZANY x6 | <b>WR</b><br>x12  | <b>H0</b><br>CZARNY<br>RAMKA x6 | <b>LED</b><br>490 mm<br>OPTION x8  | <b>WTY</b><br>OPTION x1    |
| <b>A</b><br>8x32<br>x48              | <b>B</b><br>x44   | <b>C</b><br>x44                 | <b>PK-0H45400G</b><br>GTV<br>2 kpl |                            |
| <b>ND</b><br>3,5x16<br>x37           | <b>P+H0</b><br>x6 | <b>N</b><br>3x20<br>x132        | <b>R8</b><br>x5                    | <b>DR</b><br>L-968<br>x1   |
| <b>WRU</b><br>RAMKA UCHWYT x4        | <b>SP</b><br>x10  | <b>SZP</b><br>400mm<br>x2       | <b>T</b><br>x2                     | <b>S</b><br>L-1867mm<br>x1 |
| <b>V</b><br>3x13<br>x6               | <b>Z</b><br>x20   | <b>ZC</b><br>x30                | <b>ZPK</b><br>x24                  | <b>TA</b><br>x1            |

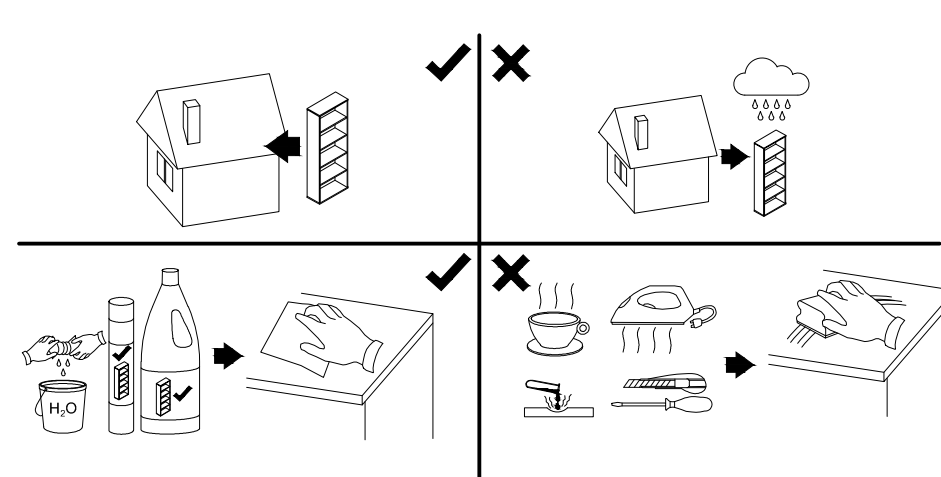
|    |      |      |     |    |       |
|----|------|------|-----|----|-------|
| 1  | 2024 | 510  | 16  | x2 | 2 / 5 |
| 2L | 2000 | 510  | 16  | x1 | 1 / 5 |
| 2R | 2000 | 510  | 16  | x1 | 1 / 5 |
| 3L | 1867 | 491  | 16  | x1 | 4 / 5 |
| 3R | 1867 | 491  | 16  | x1 | 3 / 5 |
| 4  | 508  | 460  | 16  | x4 | 3 / 5 |
| 5  | 976  | 491  | 16  | x1 | 3 / 5 |
| 6  | 508  | 460  | 16  | x2 | 5 / 5 |
| 6  | 508  | 460  | 16  | x2 | 5 / 5 |
| 7  | 2024 | 100  | 16  | x2 | 2 / 5 |
| 8L | 400  | 150  | 16  | x2 | 3 / 5 |
| 8R | 400  | 150  | 16  | x2 | 3 / 5 |
| 9  | 919  | 130  | 16  | x2 | 3 / 5 |
| 10 | 931  | 405  | 2,5 | x2 | 4 / 5 |
| 11 | 1896 | 530  | 2,5 | x2 | 1 / 5 |
| 12 | 1896 | 495  | 2,5 | x2 | 1 / 5 |
| 13 | 236  | 1004 | 16  | x2 | 2 / 5 |
| 14 | 1860 | 500  | 21  | x2 | 4 / 5 |
| 15 | 1380 | 500  | 16  | x2 | 5 / 5 |
| 16 | 976  | 460  | 16  | x2 | 5 / 5 |

05.09.2025

! **Uwaga • Upozornění • Achtung • Attention • Caution • Figyelem**  
**Attenzione • Opgelet • Внимание • Atenție • Upozornenie • Dikkat** !



! **Uwaga • Upozornění • Achtung • Attention • Caution • Figyelem**  
**Attenzione • Opgelet • Внимание • Atenție • Upozornenie • Dikkat** !

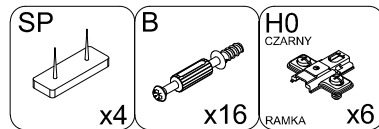
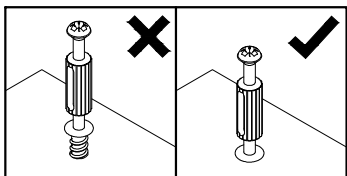
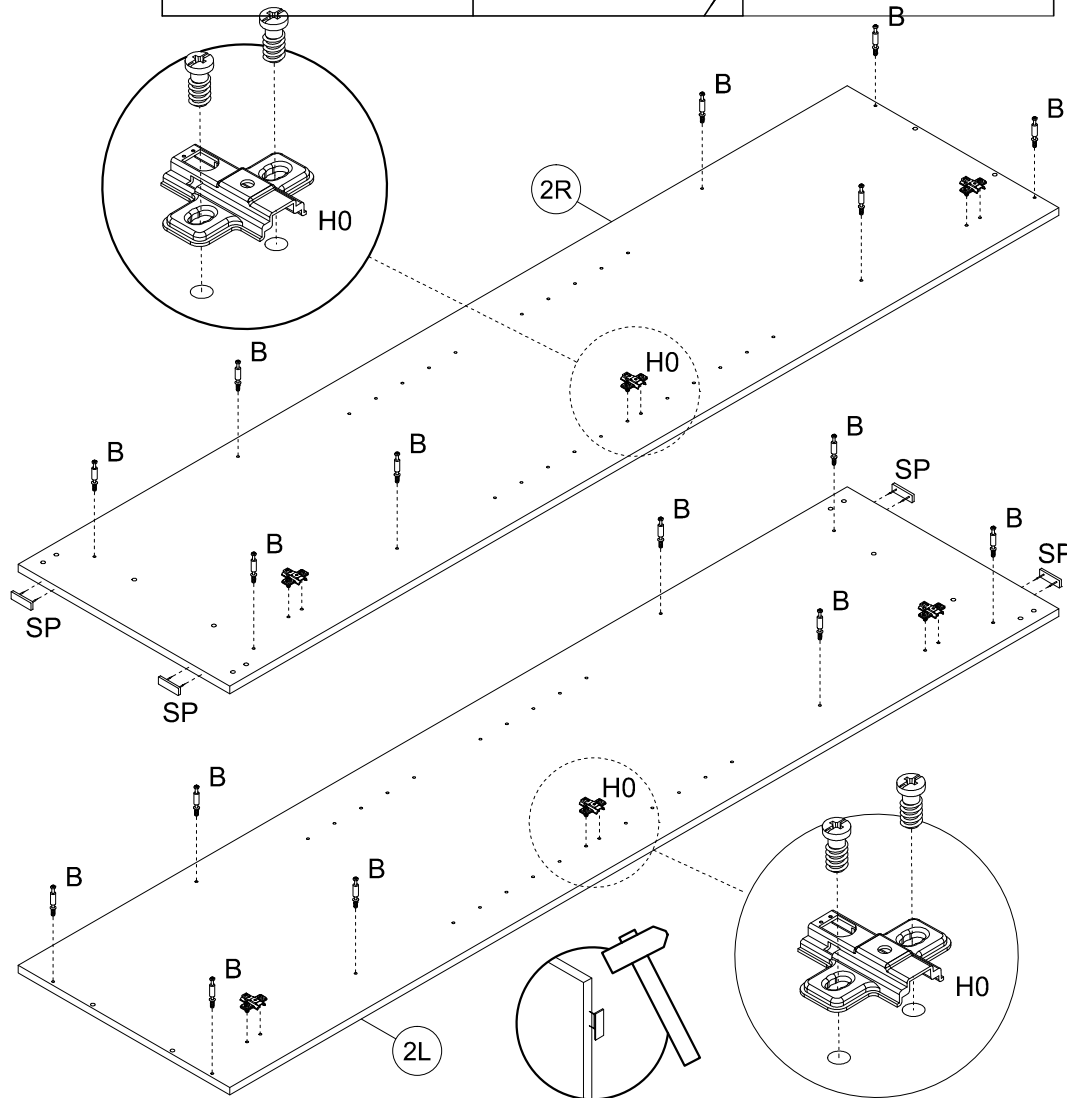
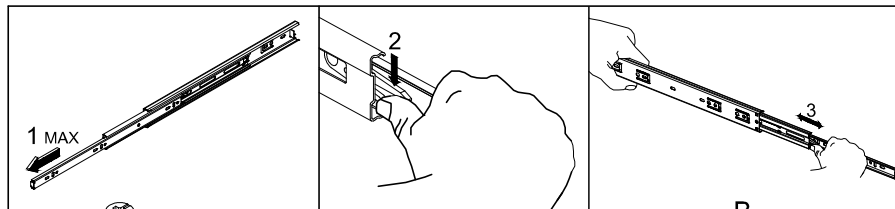


|    |  |
|----|--|
| PL | Mocowanie do ściany jest jednocześnie zabezpieczeniem przed przewróceniem - koniecznie zamontować!<br>Do niektórych rodzajów ścian koniecznie zastosować specjalne kolki mocujące. |
| CZ | Montáž na stěnu slouží jako ochrana proti převrnutí - bezpodmínečně umístěte!<br>U některých typů stěn může být zapotřebí speciální hmoždinka!                                     |
| DE | Wandbefestigung dient als Kippschutz - unbedingt anbringen!<br>bei einigen Wandtypen kann ein Spezialdübel erforderlich sein!  |
| GB | The wall fastening serves to prevent tipping - be absolutely sure to mount it!<br>For certain wall types, a special wall plug may be necessary!                                    |
| FR | La fixation murale sert de protection contre le basculement - à installer impérativement!<br>Pour certains types de murs il faut des chevilles spéciales!                          |
| NL | Bevestiging aan de muur dient als kantelbescherming - zeker en vast bevestigen!<br>Bij enkele muurtypen is een speciale plug misschien vereist!                                    |
| IT | Il fissaggio alla parete serve da protezione anti-ribaltamento-attaccarla assolutamente!<br>Per alcune strutture di parete può essere necessario un tassello speciale!             |
| HU | A termék a falhoz kel rögzítési, különben az felborulhat!<br>Egyes faltípusoknál speciális tiplőt kell használni!  |
| RU | Обязательно установите крепление на стене во избежание опрокидывания!<br>Для некоторых типов стен может потребоваться специальный дюбель!  |
| RO | Sistemul de fixare la perete servește ca protecție la răsturnare - de montat obligatoriu!<br>Pentru unele tipuri de pereți este posibil să fie necesar un diblu special!           |
| SK | Upevnenie na stenu slúži ako ochrana proti prevráteniu - bezpodmienečne použite!<br>Pre niektoré druhy stien môže byť potrebná špeciálna hmoždinka!                                |
| TR | Duvardaki sabitleme, devrilmeye karşı bir emniyet tedbiridir ve mutlaka monte edilmelidir!<br>Bazı duvar tiplerinde bunun için özel bir dübel gerekli olabilir!                    |

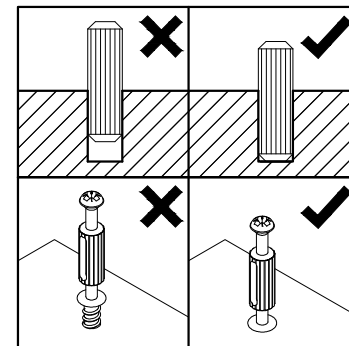
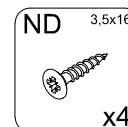
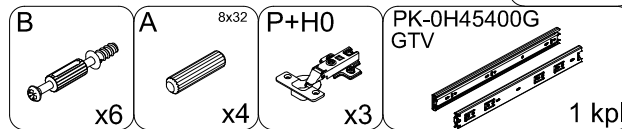
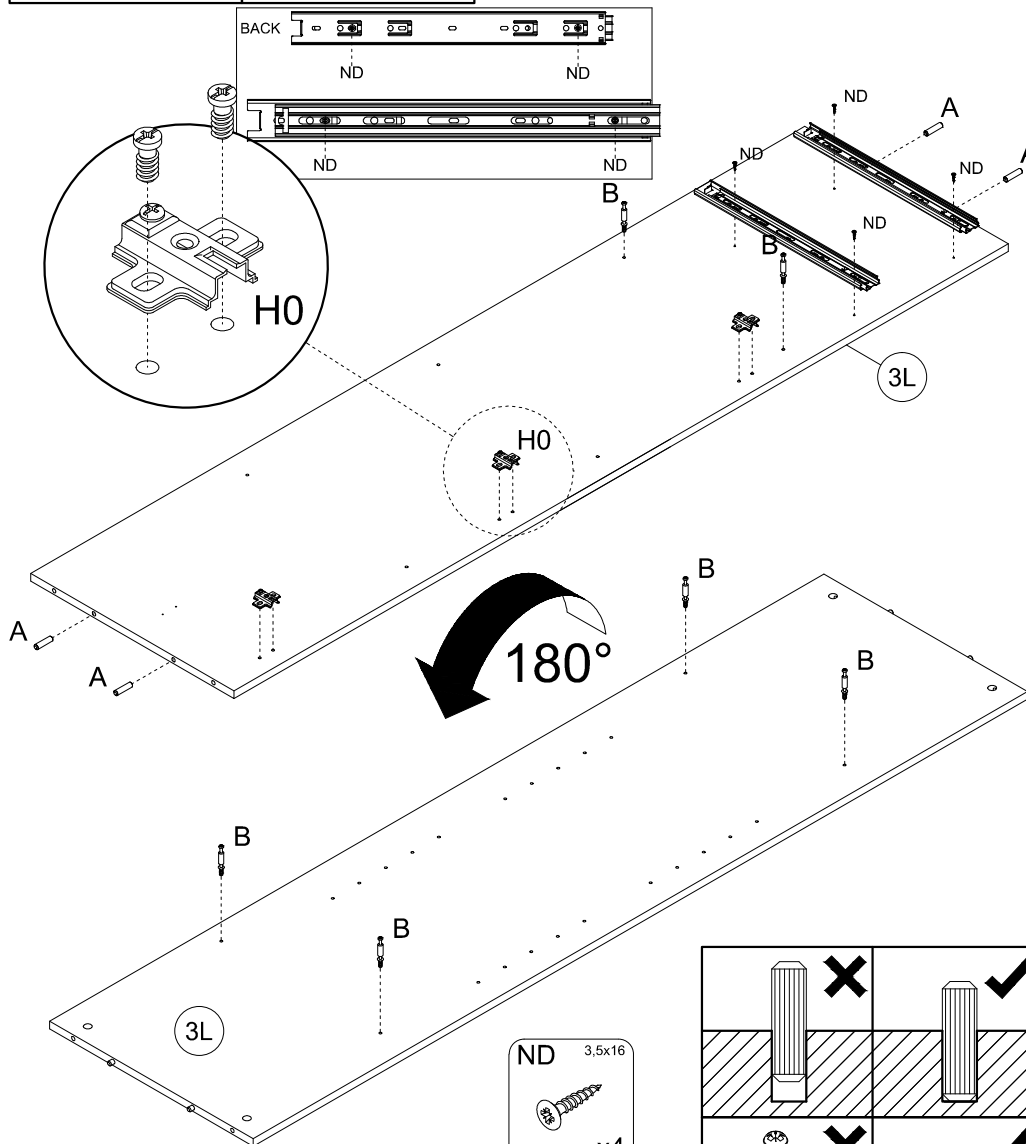
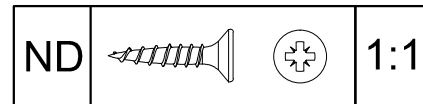
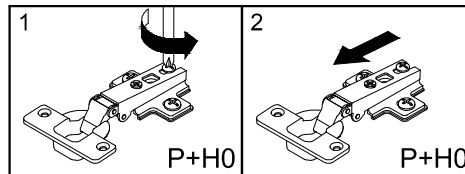
|    |   |
|----|---|
| PL | Czyszczenie należy wykonać wyłącznie za pomocą ściereczki lub lekko nawilżonego ręcznika.<br>Nie stosować środków czyszczących do szorowania.           |
| CZ | Čistění je nutné vykonávat výhradně pomocí utěrky nebo lehce navlhlého ručníku.<br>Nepoužívejte čističe obsahující abrazivní částice.                   |
| DE | Bitte nur mit einem Staubtuch oder leicht feuchtem Lappen reinigen.<br>Keine scheuernden Putzmittel verwenden.  |
| GB | Please only clean with a duster or damp cloth. Do not use any abrasive cleaners.  |
| FR | Le nettoyage se fait uniquement à l'aide d'un torchon ou d'une serviette légèrement mouillée.   |
| NL | Reinig alleen met een stofdoek of een lichtjes vochtige doek.<br>Gebruik geen schurende poetsmiddelen.  |
| IT | Pulire esclusivamente con un panno o un asciugamano umido.  |
| HU | A tisztítás kizárólag törleruha vagy enyhén nedvesített törölköző segítségével végezhető.<br>Súroló hatású tisztítószerket nem szabad használni.        |
| RU | Очищайте от пыли тряпкой или слегка влажной ветошью. Не допускается применение чистящих средств, не предназначенных для ухода за мебелью.               |
| RO | Curățarea trebuie efectuată numai cu o cârpă sau cu un prosop ușor umezit.<br>Nu utilizați agenți de curățare abrazivi.                                 |
| SK | Čistenie je nutné vykonávať výhradne pomocou utierky alebo ľahko zvlhnutým ručníkom.<br>Nepoužívajte čistiace prostriedky obsahujúce abrazívne častice. |
| TR | Lütfen sadece bir toz bezilye veya hafif nemli yumuşak bir bezle siliniz. Aşındırıcı temizlik malzemeleri kullanmayınız.                                |



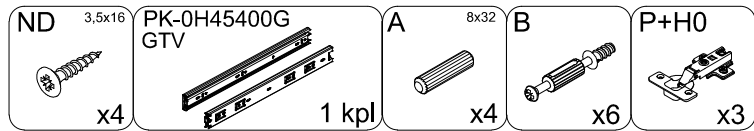
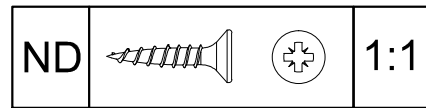
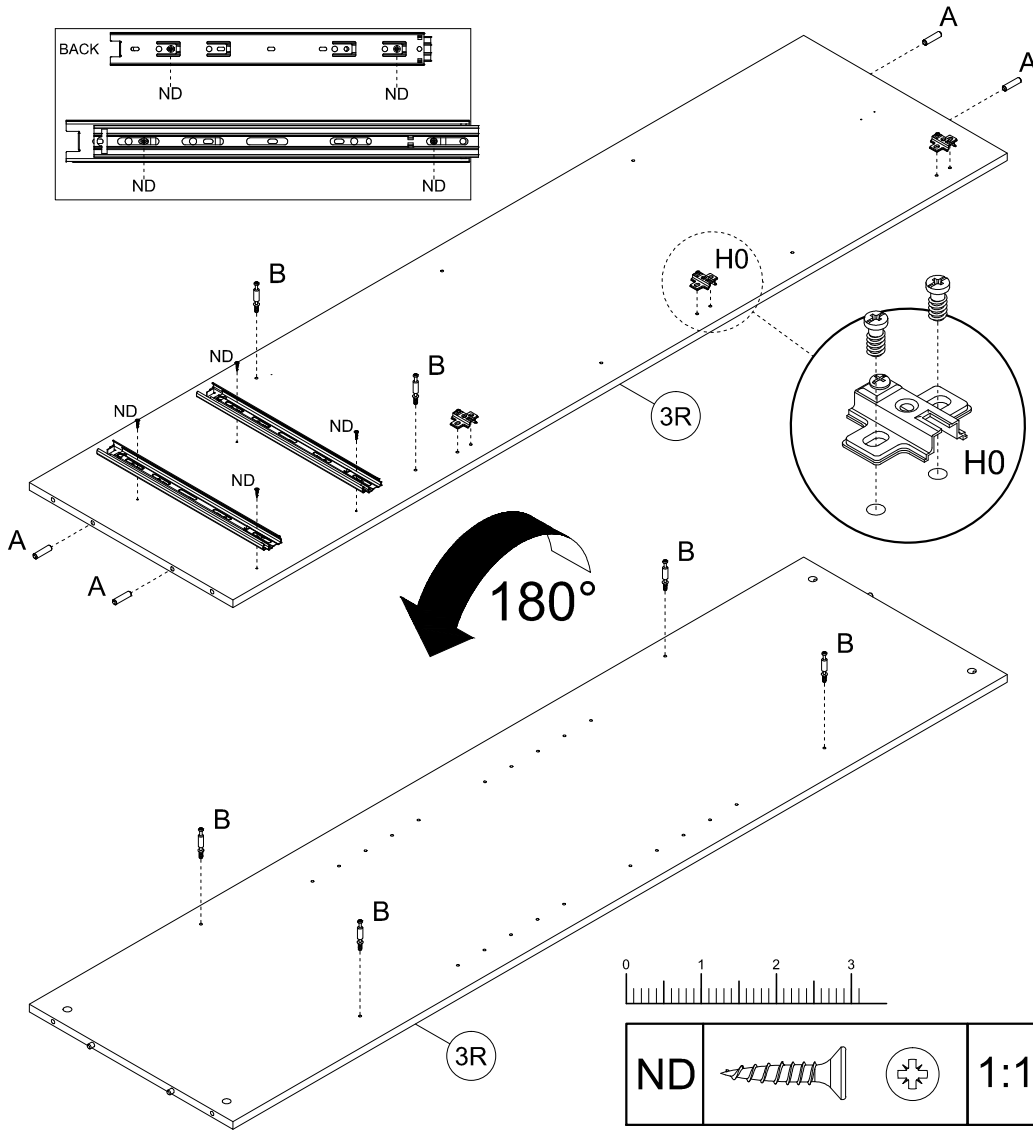
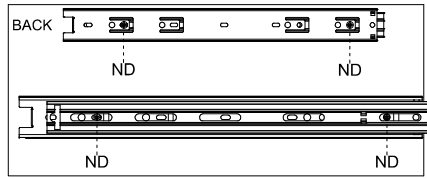
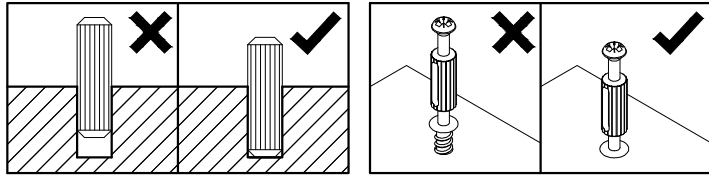
3



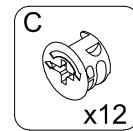
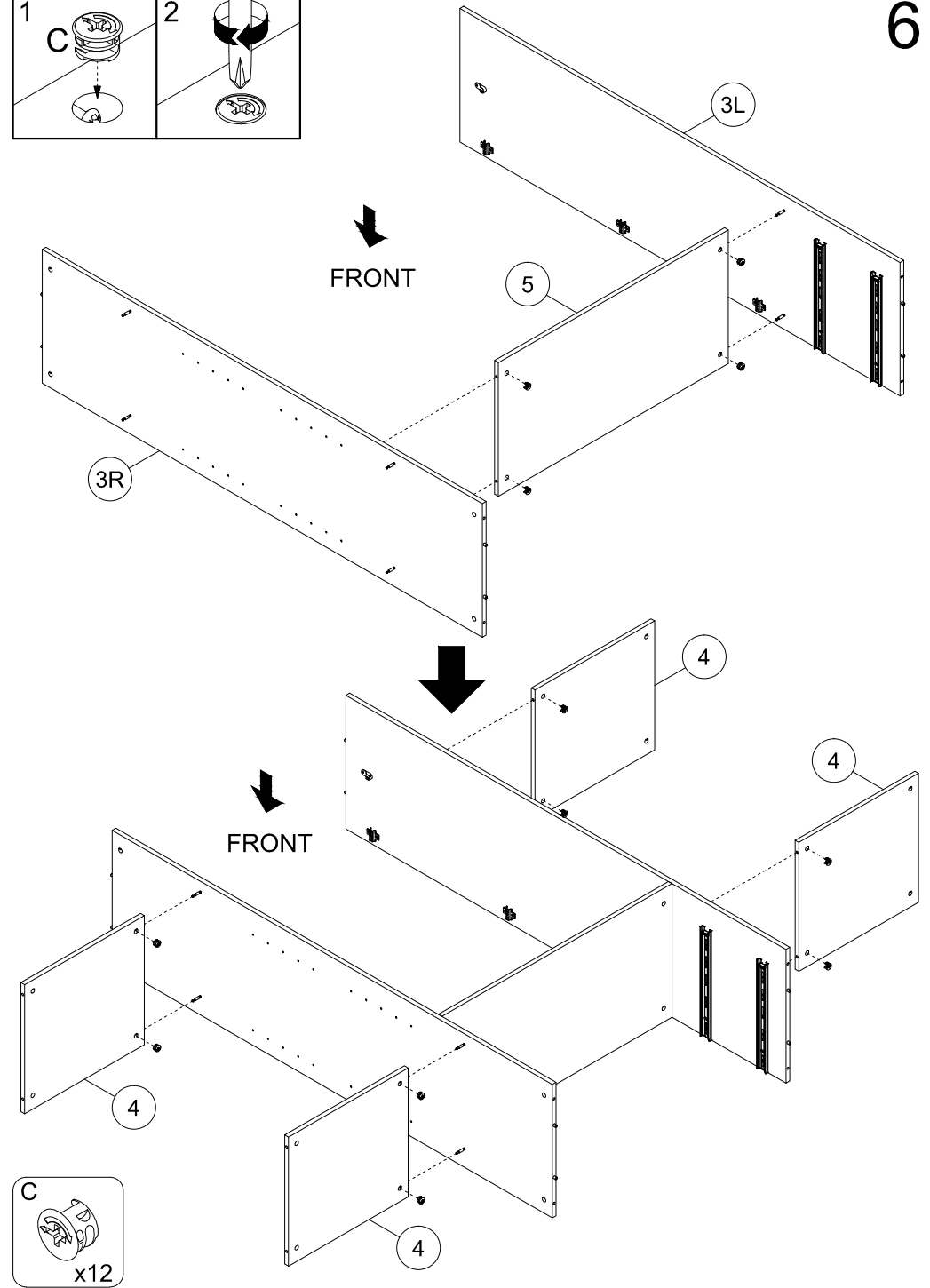
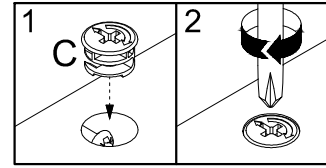
4



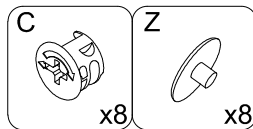
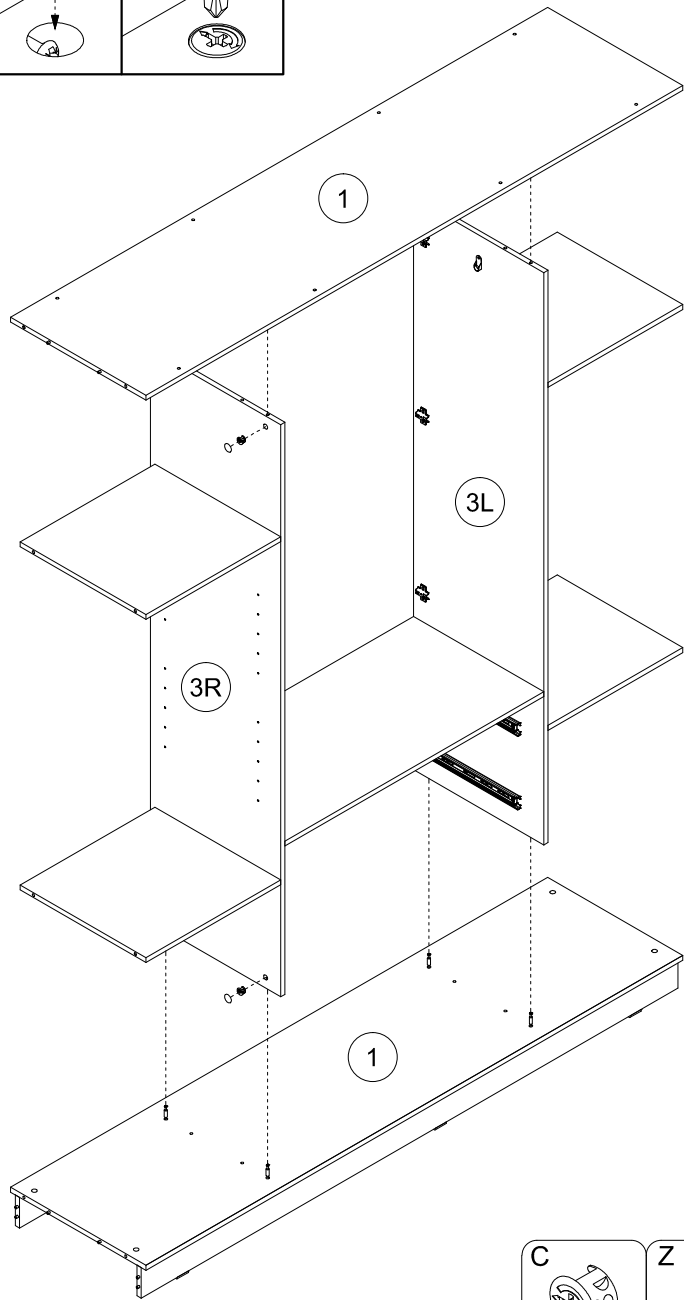
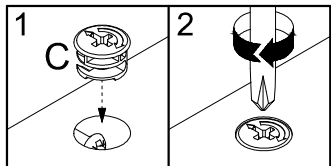
5



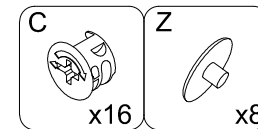
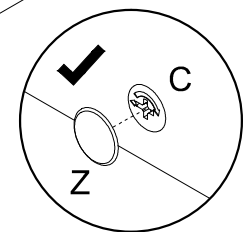
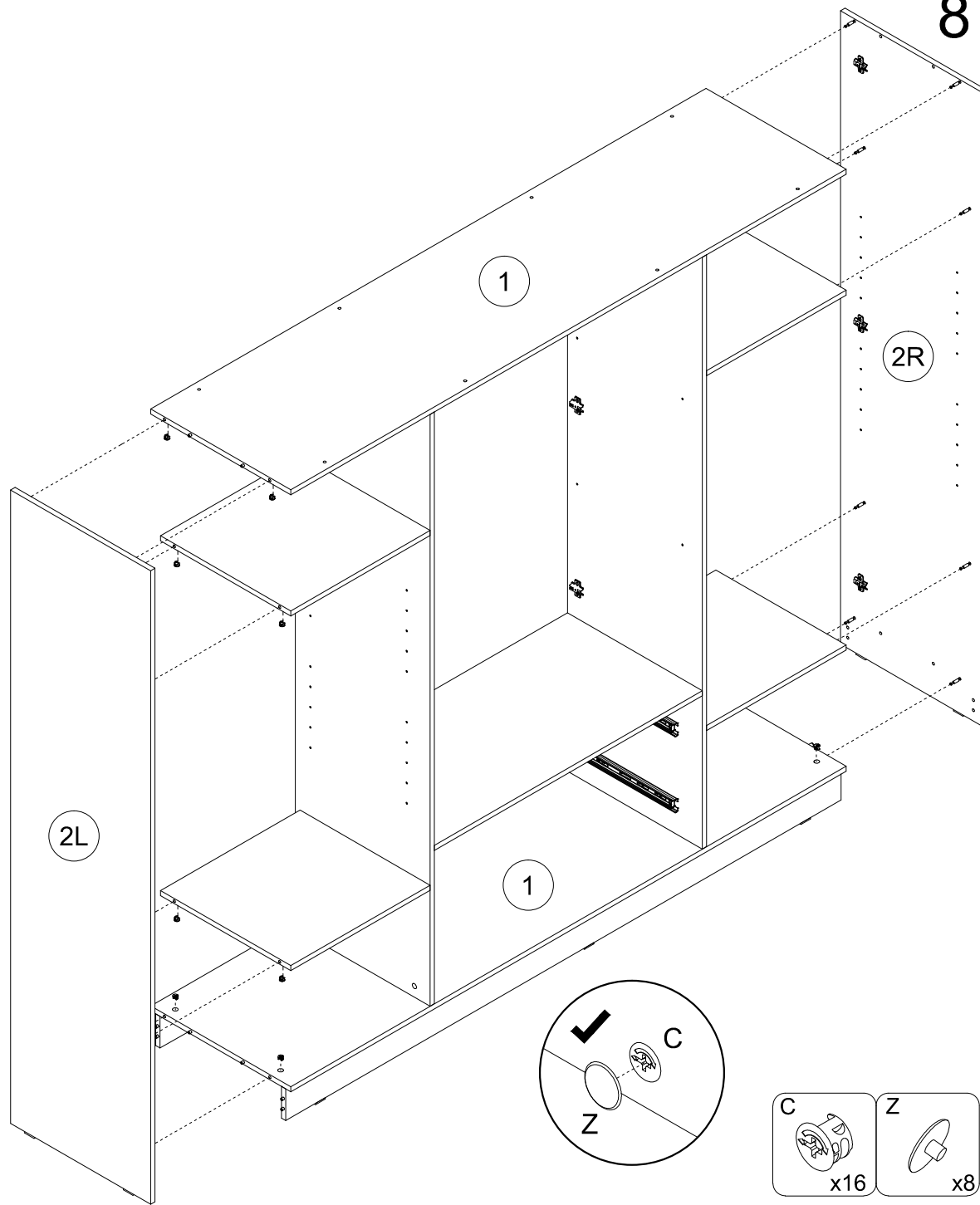
6



7

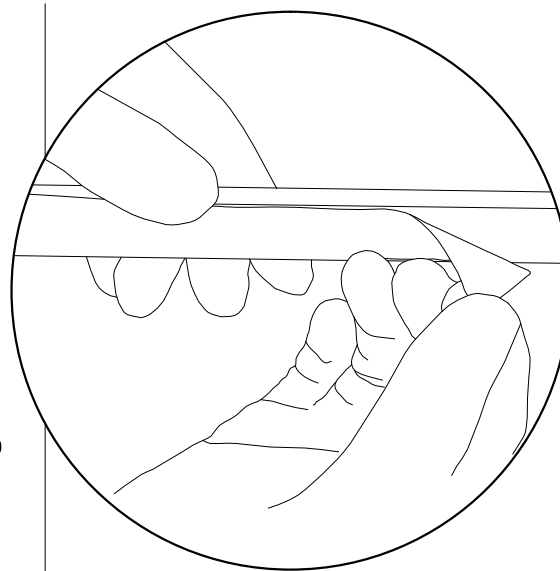
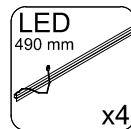
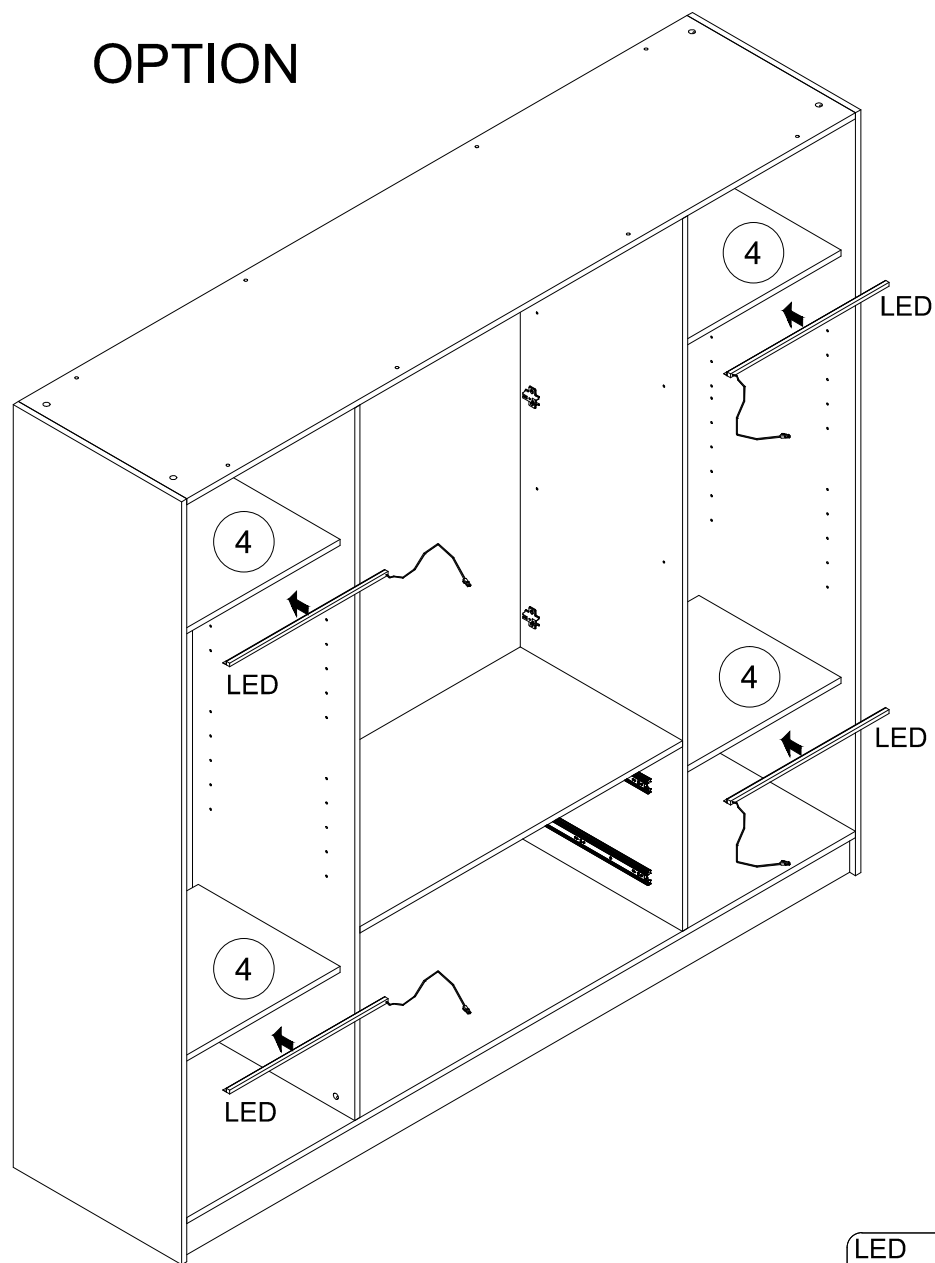


8



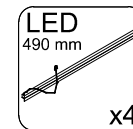
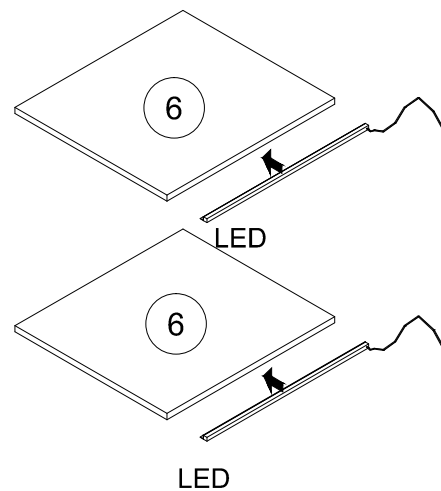
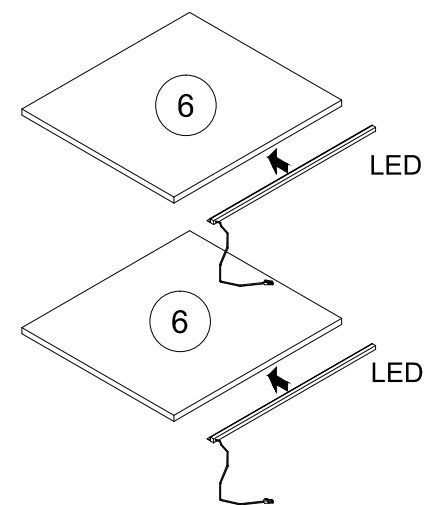
9

OPTION

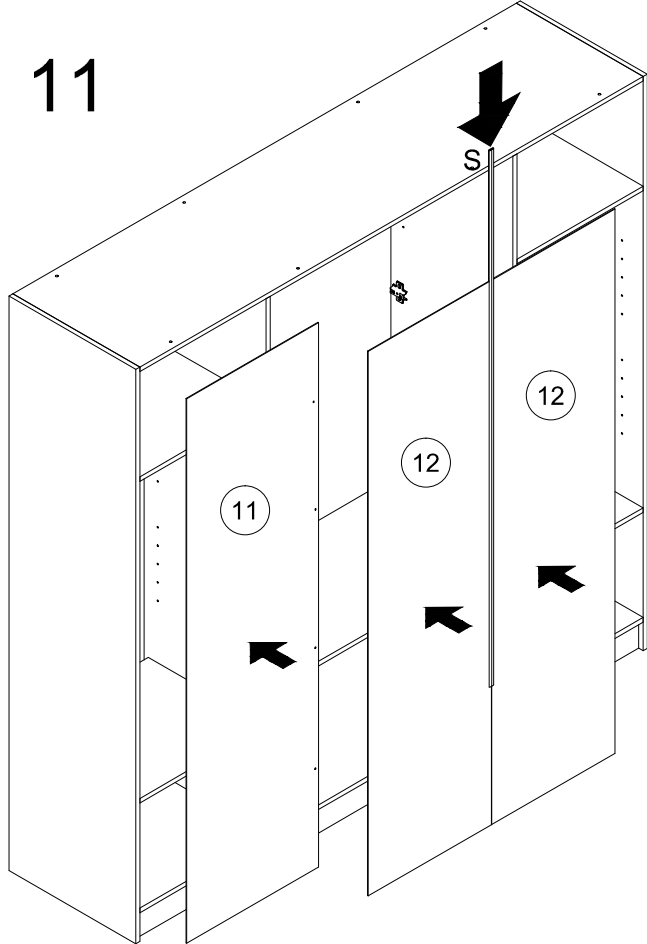


10

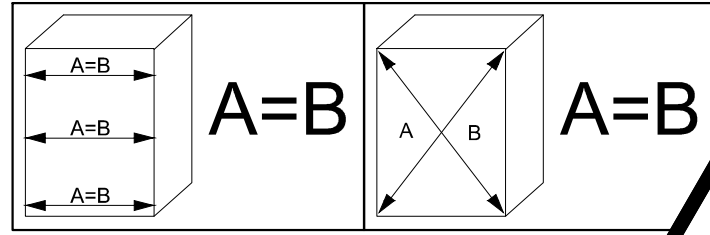
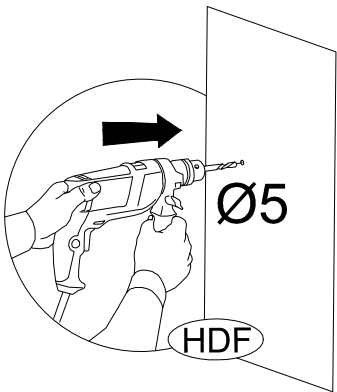
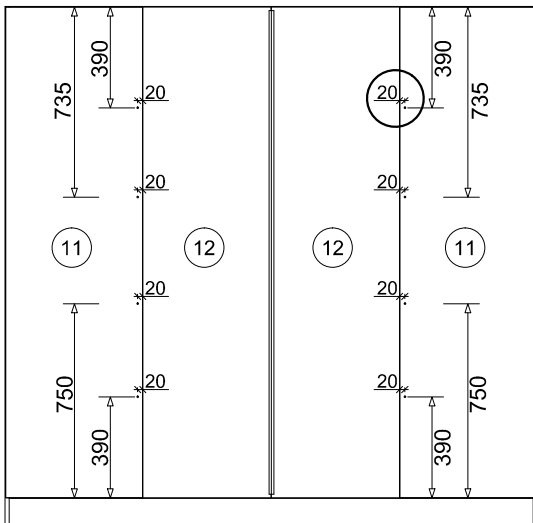
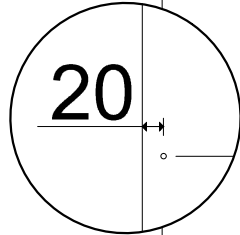
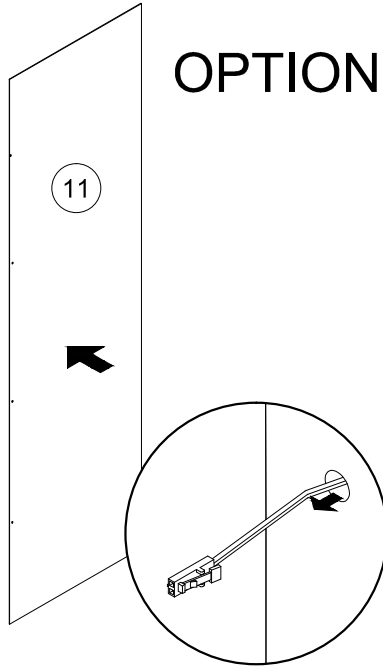
OPTION



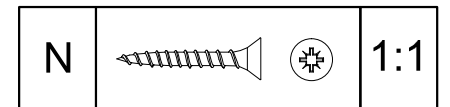
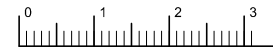
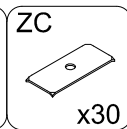
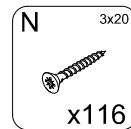
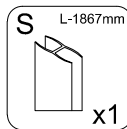
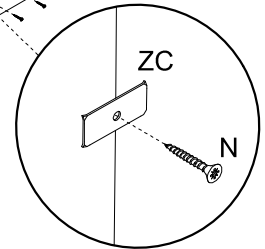
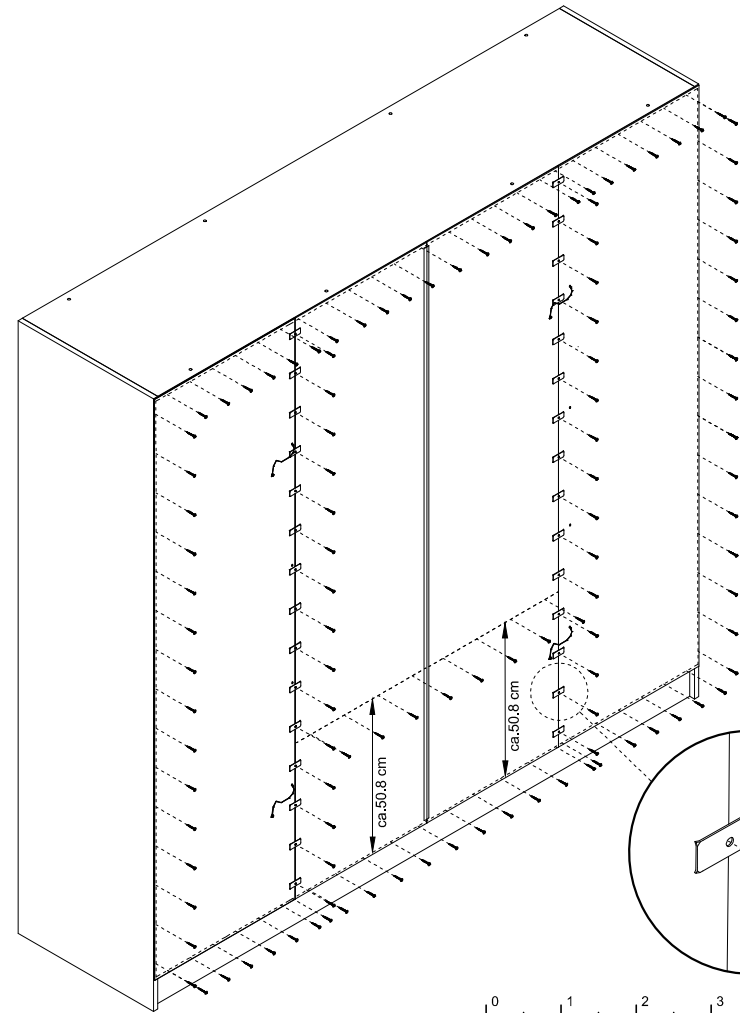
11



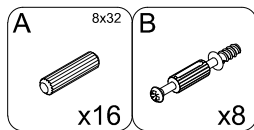
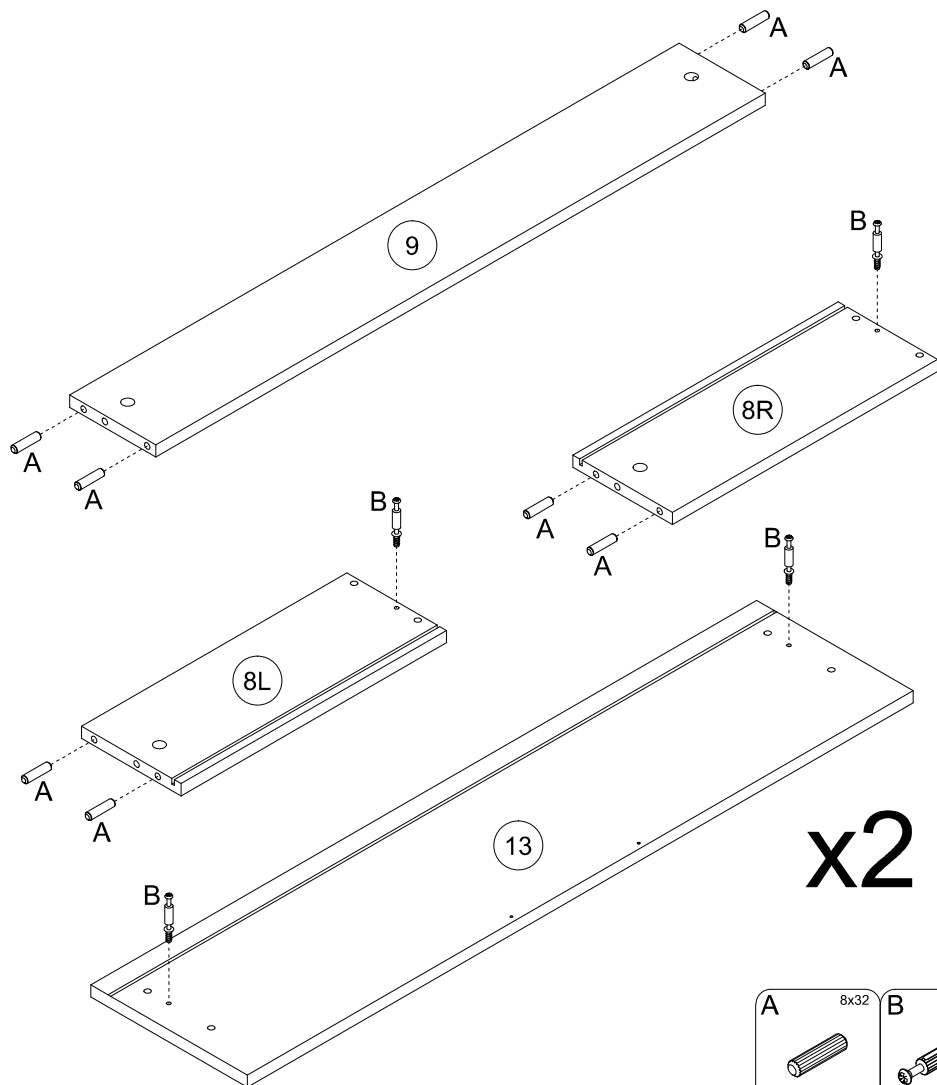
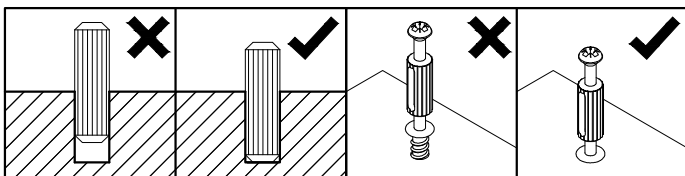
OPTION



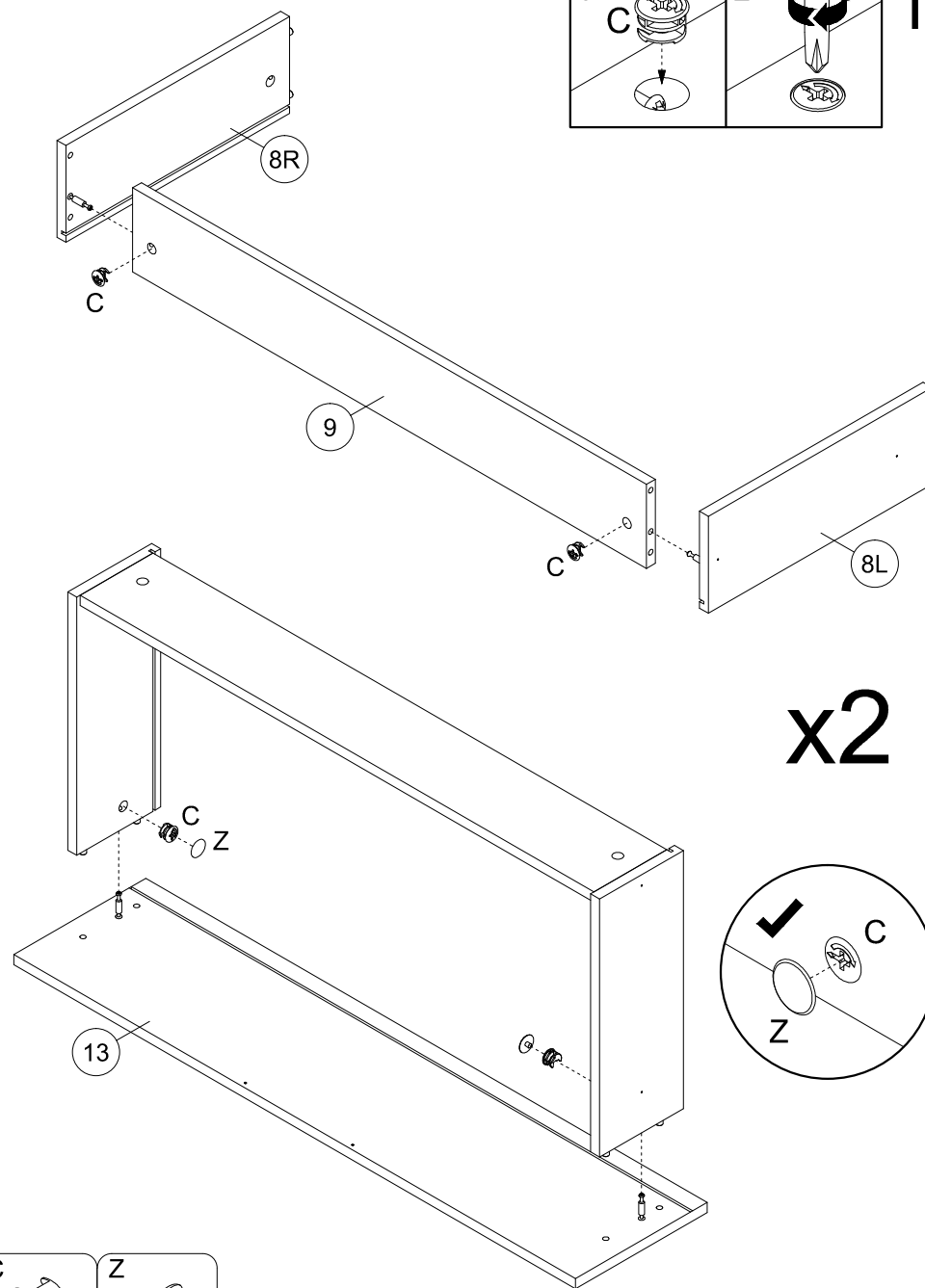
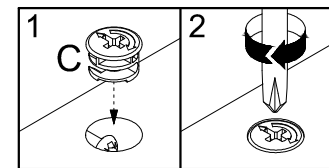
12



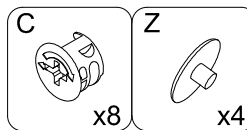
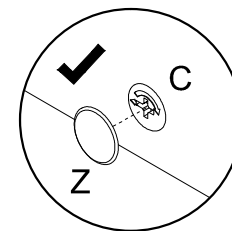
13



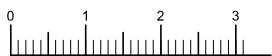
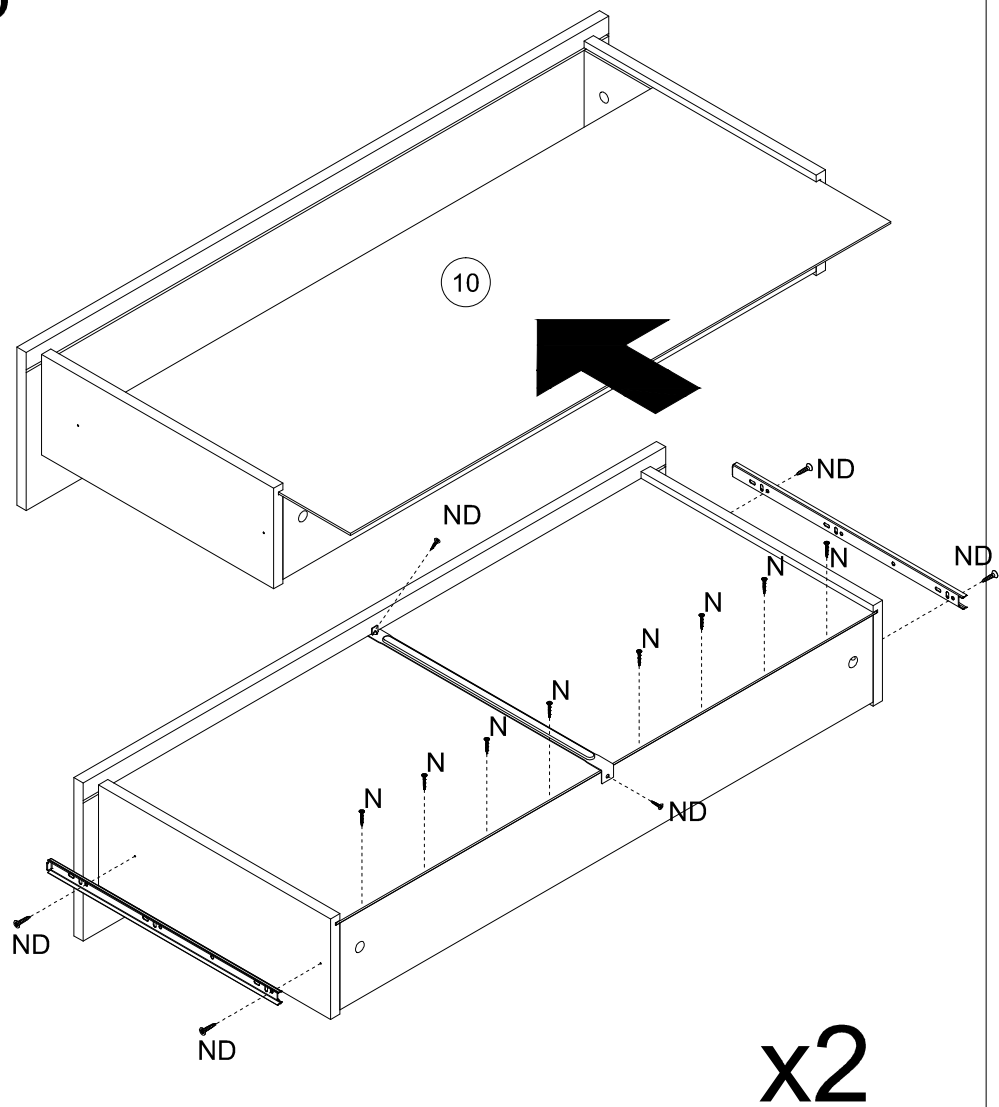
14



x2



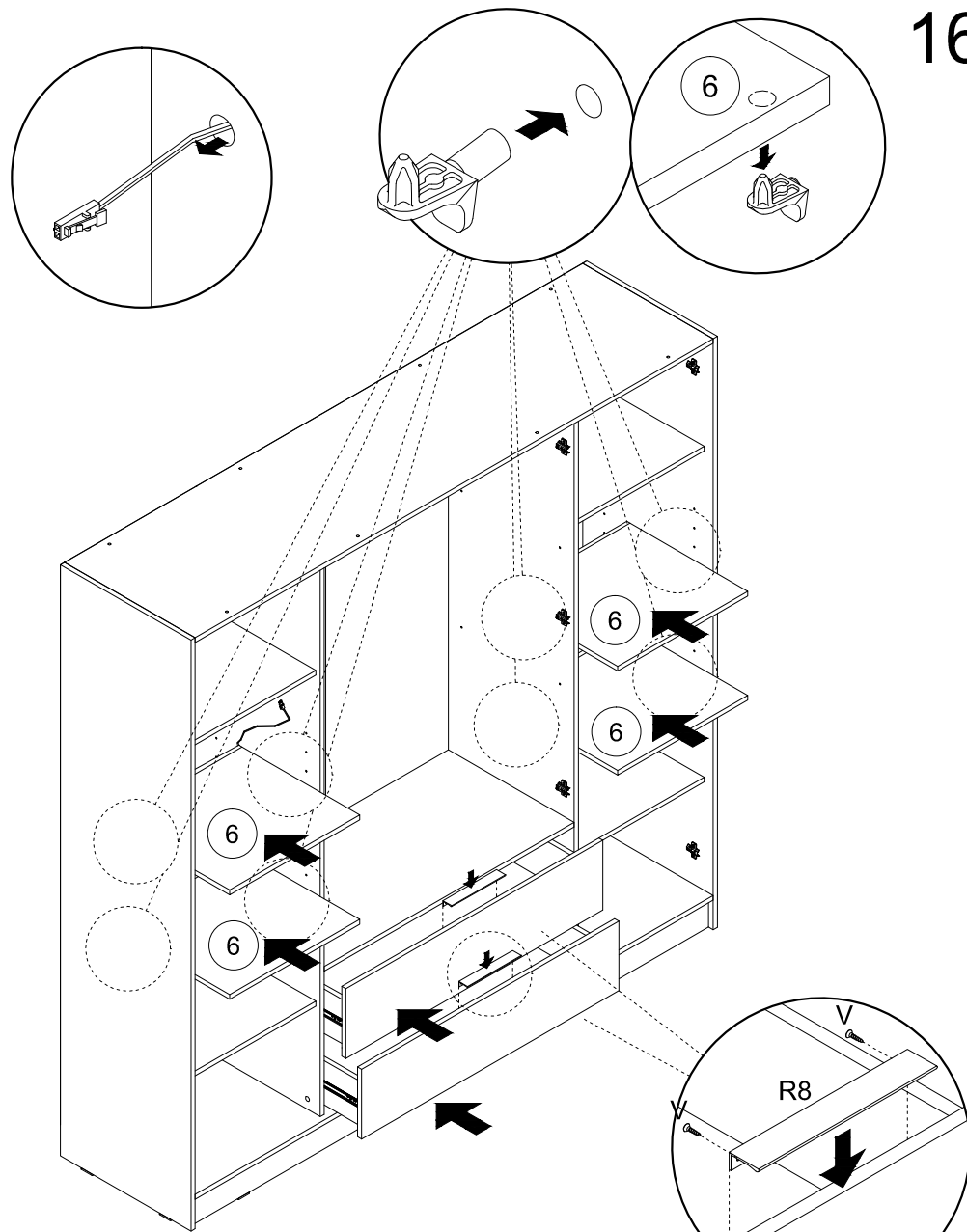
15



|    |  |  |     |
|----|--|--|-----|
| ND |  |  | 1:1 |
| N  |  |  | 1:1 |

|                    |        |           |           |
|--------------------|--------|-----------|-----------|
| PK-0H45400G<br>GTV | N 3x20 | ND 3,5x16 | SZP 400mm |
|                    |        |           |           |
| 2 kpl              | x16    | x12       | x2        |

16

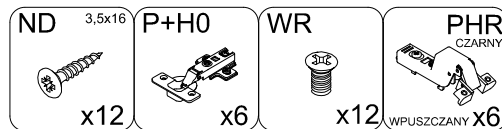
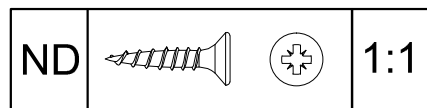
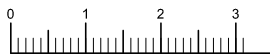
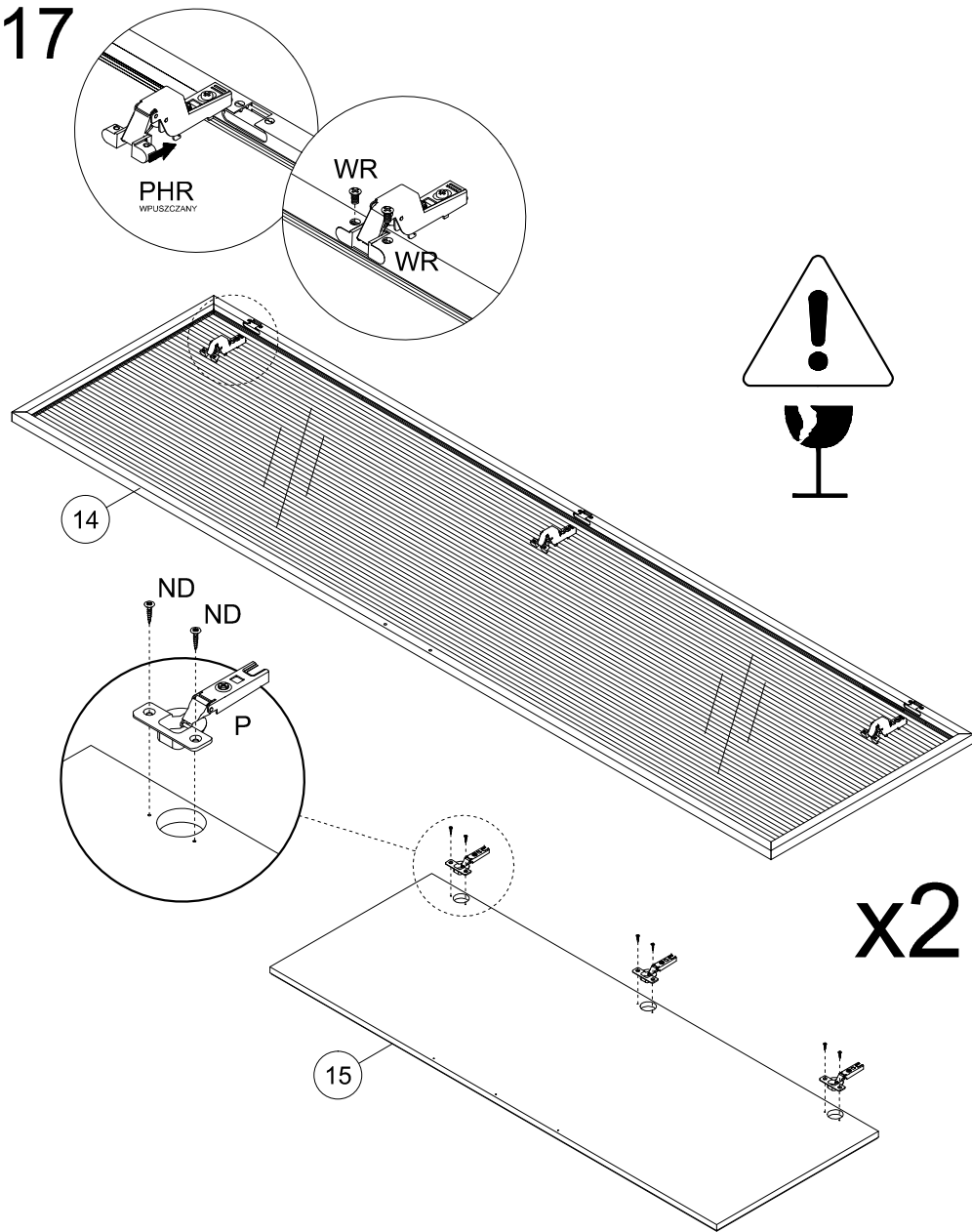


|    |        |     |
|----|--------|-----|
| R8 | V 3x13 | ZPK |
|    |        |     |
| x2 | x4     | x16 |

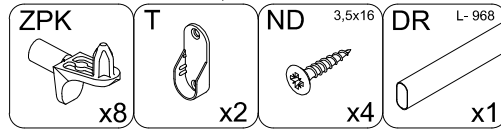
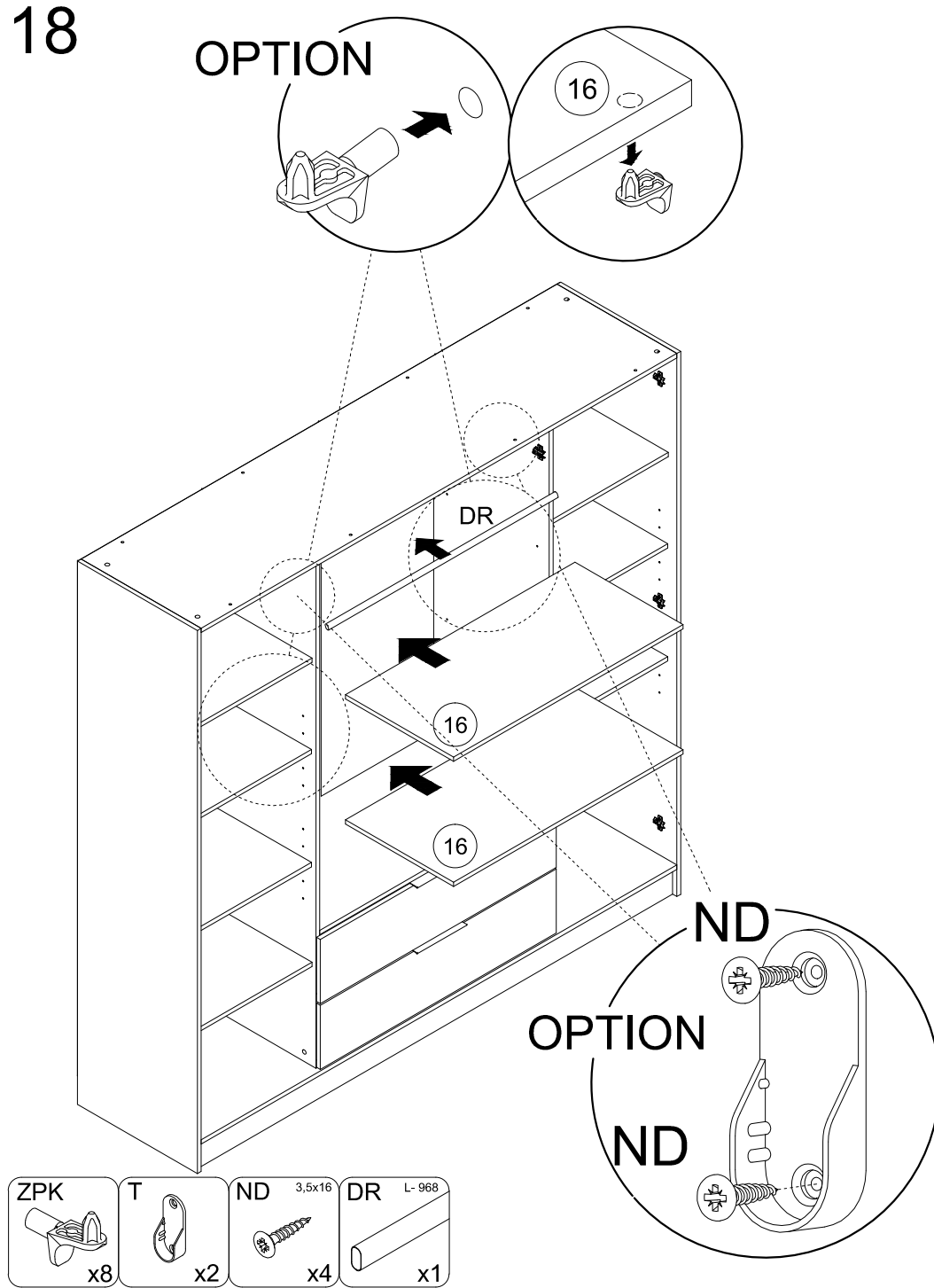
|   |  |  |     |
|---|--|--|-----|
| V |  |  | 1:1 |
|---|--|--|-----|



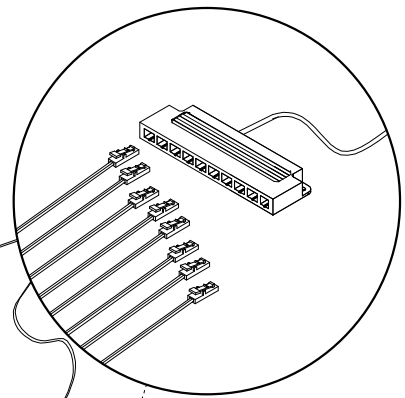
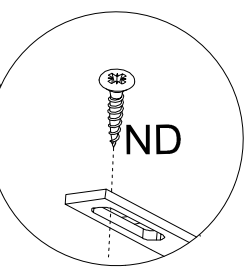
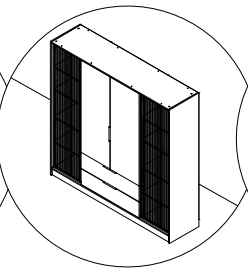
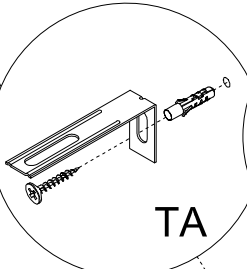
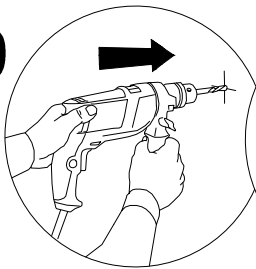
17



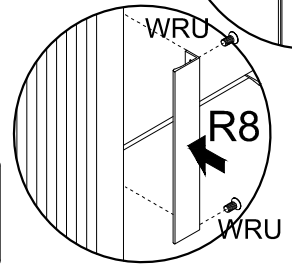
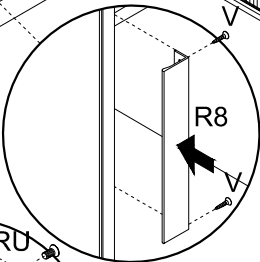
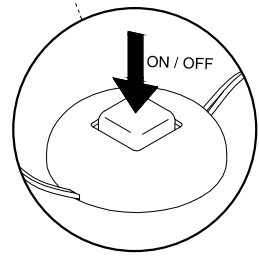
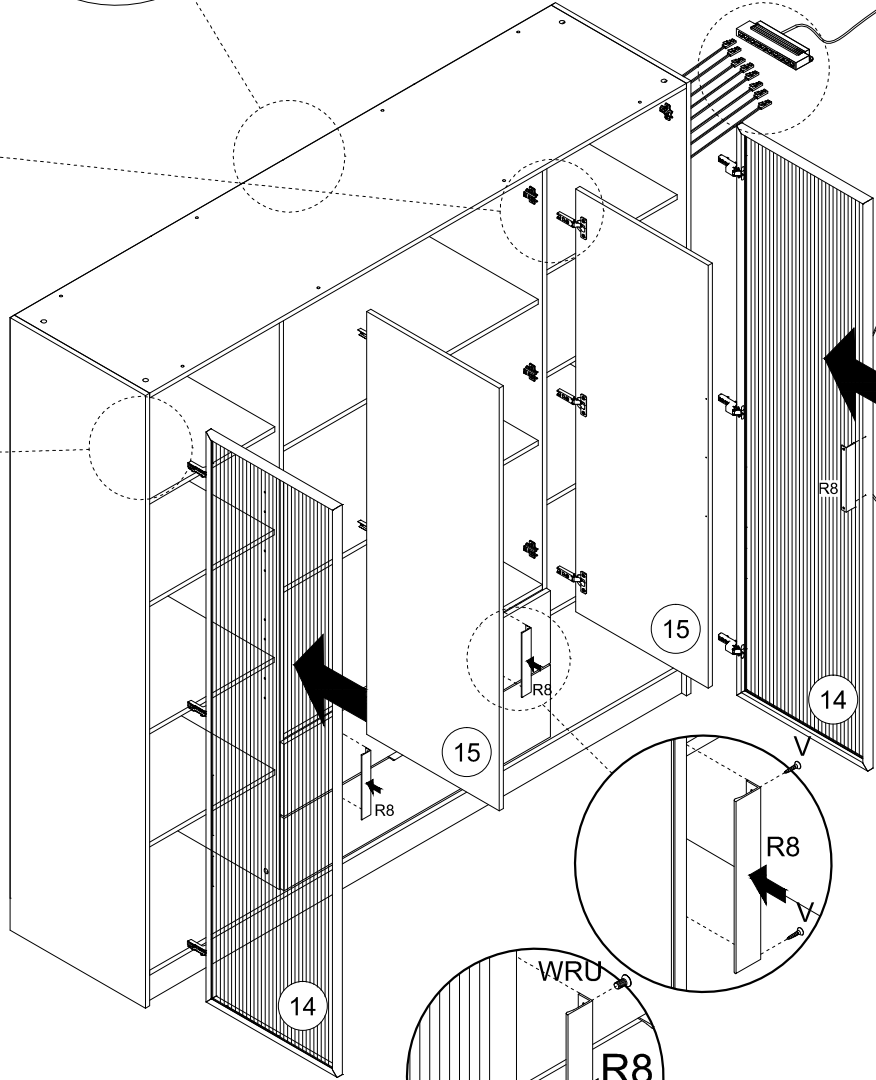
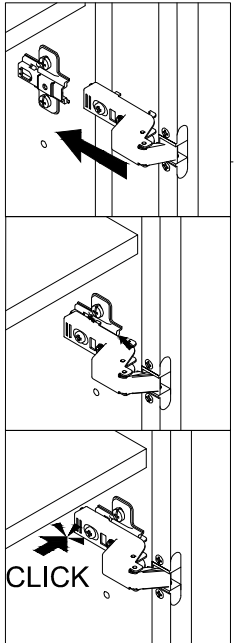
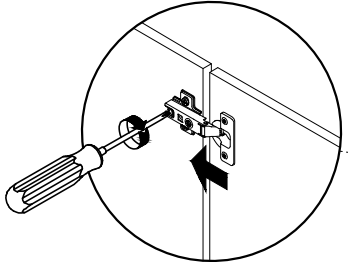
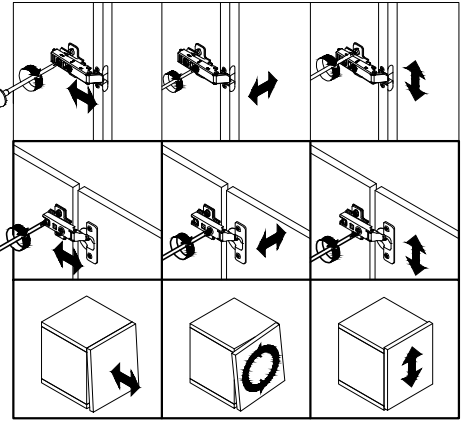
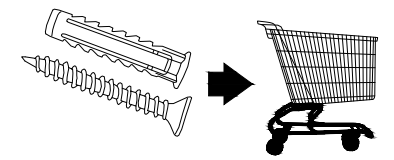
18



19

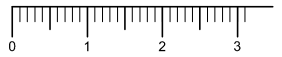


OPTION



- |    |
|----|
| R8 |
|    |
| x3 |
- |            |
|------------|
| V          |
|            |
| 3x13<br>x2 |
- |                    |
|--------------------|
| WRU                |
|                    |
| RAMKA UCHWYT<br>x4 |
- |              |
|--------------|
| ND           |
|              |
| 3,5x16<br>x1 |
- |    |
|----|
| TA |
|    |
| x1 |
- |     |
|-----|
| WTY |
|     |
| x1  |

|    |  |  |     |
|----|--|--|-----|
| ND |  |  | 1:1 |
|----|--|--|-----|



|   |  |  |     |
|---|--|--|-----|
| V |  |  | 1:1 |
|---|--|--|-----|

